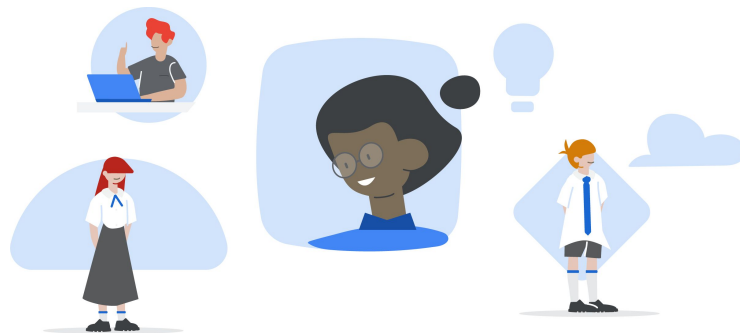


Google for Education

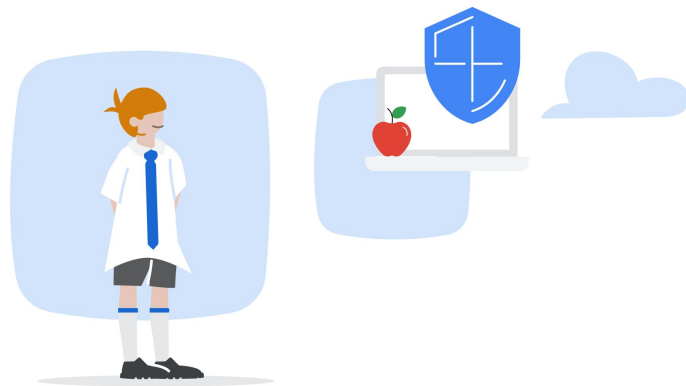
G Suite Enterprise for Education

By Digisoft
Google for Education
Partner



The main goal for K-12 IT is to improve learning while keeping districts and students safe

CoSN's 2020 K-12 IT Hurdles
& Accelerators Report



Security threats have become more apparent

2x +

increase of the amount of cyberattacks on educational institutions¹

2.2 million

sensitive records have been exposed in education²

600%

increase YoY of the average ransomware payout, to \$41k across all industries³

1. [Cyberattacks Force Schools to Bolster Online Security](#)
2. Identity Theft Resource Center, [2019 Data Breaches](#)
3. [Education ranked worst at cybersecurity out of 17 major industries](#)

Upgrade with Google for proactive security

2x +

increase of the amount of cyberattacks on educational institutions¹



We can absorb the largest attacks, which require the bandwidth needed to watch 500,000 YouTube videos in HD at the same time.

2.2 million

sensitive records have been exposed in education²



We can filter 10 million spam and malicious emails every minute.

600%

increase YoY of the average ransomware payout, to \$41k across all industries³



We protect 3 billion devices from URLs with malicious content every day.

There is room to improve K-12 learning tools

10+

minimum occasions a year that recorded lessons or assemblies would be helpful¹

58%

of students have admitted to plagiarizing content²

500+ hrs

spent by language arts teachers to grade, per year³

1. Drawn from sources [Summary Health Statistics: National Health Interview Survey, 2018](#)
2. [10 Plagiarism Statistics You Have to See to Believe](#)
3. [I Get Paid for 180 Days of Work Each Year, but I Actually Work More Than 250](#)

Upgrade with Google for advance learning tools

10+

minimum occasions a year that recorded lessons or assemblies would be helpful¹



Enable livestream up to 100k in-domain participants and record lessons to help students stay on top of their studies even if they can't be in the classroom physically.

58%

of students have admitted to plagiarizing content²



Scan assignments for matches across hundreds of billions of web pages and tens of millions of books, and against all student work within your domain using the power of Google Search.

500+ hrs

spent by language arts teachers to grade, per year³



Streamline grading by utilizing originality reports to help correct citations or compare student work.

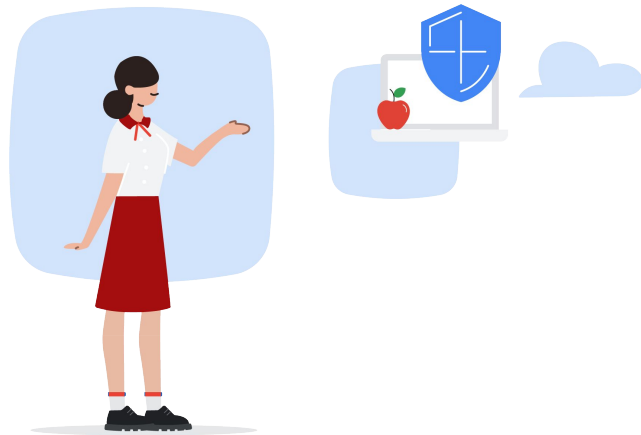
1. Drawn from sources [Summary Health Statistics: National Health Interview Survey, 2018](#)
2. [10 Plagiarism Statistics You Have to See to Believe](#)
3. [I Get Paid for 180 Days of Work Each Year, but I Actually Work More Than 250](#)

G Suite Enterprise for Education



The #1 trend for higher ed IT: the growing complexity of security threats.

EDUCAUSE most influential
trends 2020



Security threats have become more apparent

2x +

increase of the amount of cyberattacks on educational institutions¹

2.2 million

sensitive records have been exposed in education²

600%

increase YoY of the average ransomware payout, to \$41k across all industries³

1. [Cyberattacks Force Schools to Bolster Online Security](#)
2. Identity Theft Resource Center, [2019 Data Breaches](#)
3. [Education ranked worst at cybersecurity out of 17 major industries](#)

Upgrade with Google for proactive security

2x +

increase of the amount of cyberattacks on educational institutions¹



We can absorb the largest attacks, which require the bandwidth needed to watch 500,000 YouTube videos in HD at the same time.

2.2 million

sensitive records have been exposed in education²



We can filter 10 million spam and malicious emails every minute.

600%

increase YoY of the average ransomware payout, to \$41k across all industries³



We protect 3 billion devices from URLs with malicious content every day.

Room to improve higher education learning tools

42%

US college students have cited from sourcing incorrectly¹

21%

increase in distance learning enrollments from 2015 to 2019²

4.2%

projected growth rate of higher education enrollments worldwide³

1. [10 Facts About Students and Plagiarism](#)
2. NCES, [Number and percentage distribution of students enrolled at Title IV institutions](#)
3. ICEF Monitor, [Study projects dramatic growth for global higher education through 2040](#)

Upgrade with Google for advanced learning tools

42%

US college students have cited from sourcing incorrectly¹



Scan assignments for matches across hundreds of billions of web pages and tens of millions of books, and against saved student work within your domain using the power of Google Search.

21%

increase in distance learning enrollments from 2015 to 2019²



Learn on the go with video meeting capacities of up to 250 participants and livestreams of up to 100k in-domain participants.

4.2%

projected growth rate of higher education enrollments world wide³



Our top products support over a billion users. We are built for scalability. As you grow, we grow with you.

1. [10 Facts About Students and Plagiarism](#)
2. NCES, [Number and percentage distribution of students enrolled at Title IV institutions](#)
3. ICEF Monitor, [Study projects dramatic growth for global higher education through 2040](#)

Introducing G Suite Enterprise for Education

Upgrade your G Suite environment with enhanced security and learning tools



Enhance security, visibility, and control.



Do more with your data and insights



Expand learning possibilities with video



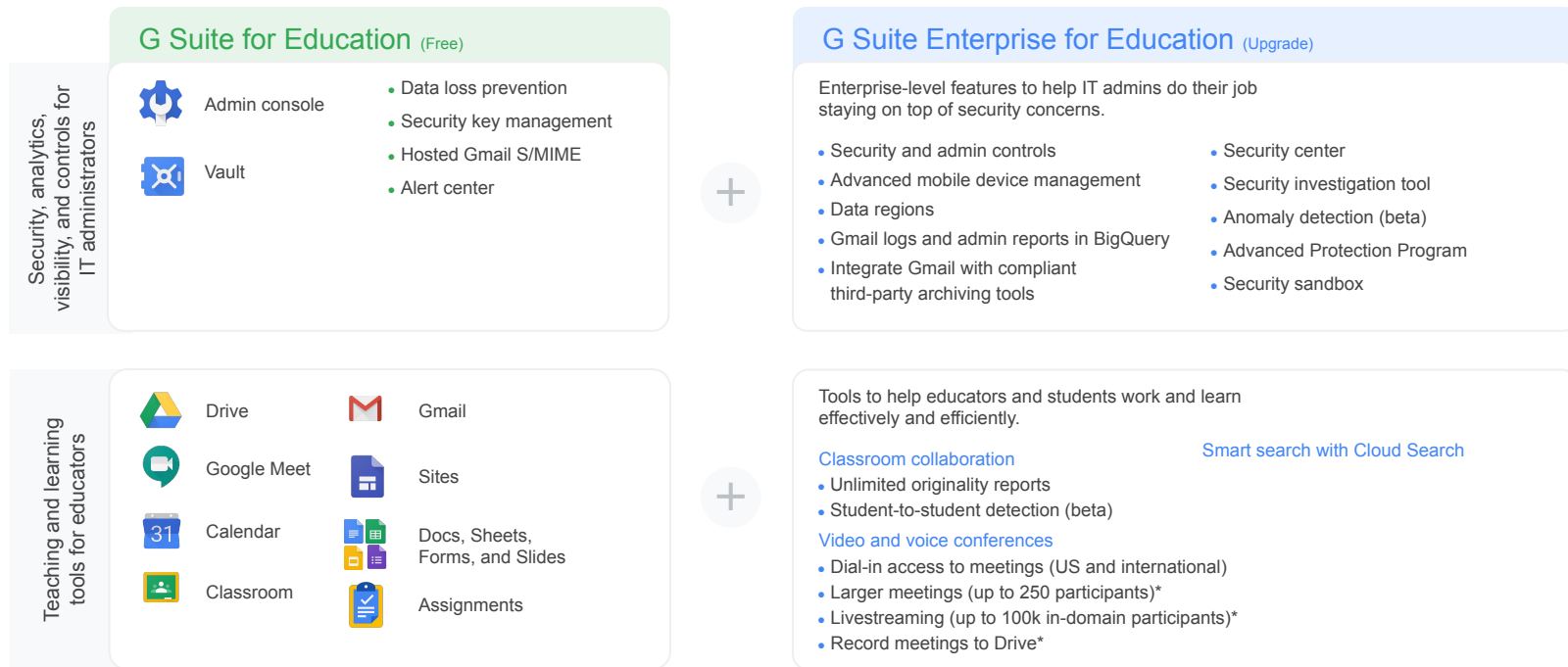
Empower authentic thinking



Priority access to dedicated support

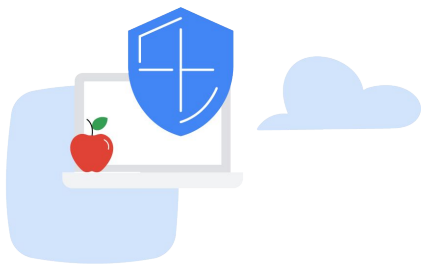
Upgrade to G Suite Enterprise for Education

Layer on additional security controls and enhanced teaching and learning tools



Get proactive on security

Reduce risk and better protect your users.



Gain more control and visibility with enhanced tools built for the task of protecting today's learning environments.



Streamline admin by automating manual tasks so you can focus on [proactive risk prevention, detection, and remediation](#).



Easily export data for [analysis, insights, and reporting](#).

Empower teaching and learning

Provide more ways to engage and think together.



Take teaching and learning to the next level for educators and students.



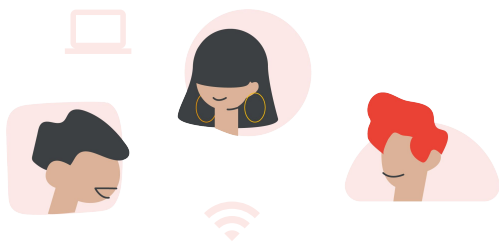
Broaden your **communication** capabilities and enable **collaborative teaching** and learning from anywhere with video meetings.



Strengthen student work with enhanced tools that foster **authentic thinking** and **critical writing skills**.

Get priority access to dedicated support

Available for customers with 200+ seats.



Remove roadblocks, avoid downtime, and stay focused on your users.



Optimize your learning environment with help from **product experts**.



Resolve problems faster with a **priority request system**, or reach a support team member **by phone immediately**.

Google is committed to investing in education



Free tools for any school to use

G Suite for Education will continue to remain free for all schools. And Google will continue to partner with educators to develop our free teaching and learning tools.



Upgraded tools for those who need them

G Suite Enterprise for Education represents our focus on developing tools with more advanced controls capabilities, because not all schools – or learners – are the same.

Feature overview



Upgrade your security and admin controls



Enhanced security,
visibility, and controls



Do more with data and
insights

Enhance visibility, security, and control

Implement security best practices with security analytics and integrated remediation tools all-in-one place. Help your school prevent, detect, and remediate security incidents.



Security health page



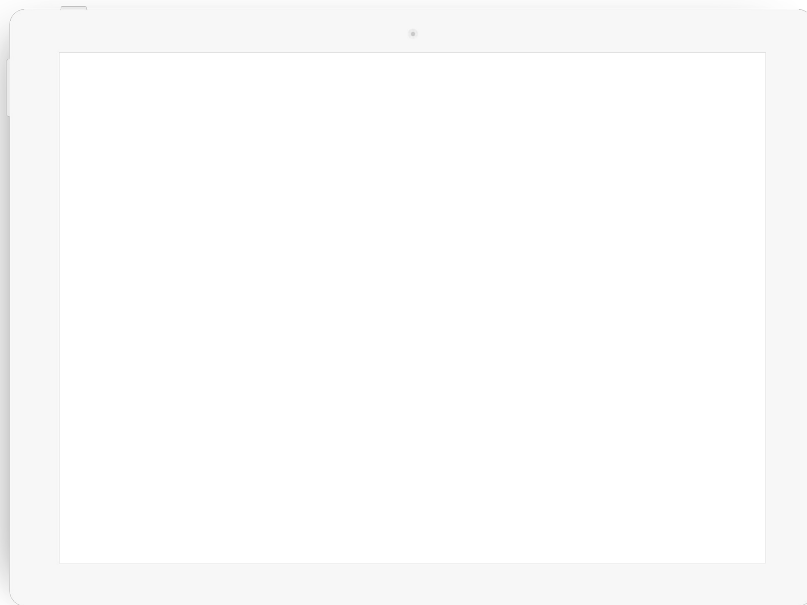
Security center dashboard



Investigation tool



Advanced mobile device management



Easily manage and take action with advanced administrative controls

1

Use the **security health page** to get actionable recommendations, search security policies and support articles to make informed decisions to solve potential risk areas.

2

Use the **security center dashboard** to oversee your domain activity with instant reports on file exposure, authentication, settings, and more.

3

Remediate attacks such as malware, phishing, and spam, with the **investigation tool**, which lets you quickly drill down into issues, triage, and take action from a central console.

4

Ensure students and educators have devices with preloaded approved apps with the help of **advanced mobile device management**.





Security health page



Prevent [security incidents](#) by proactively tightening security across G Suite and down to individual organizational units - with [customized recommendations](#).



Enable [Gmail](#) automatic email forwarding, DMARC settings, POP/IMAP access, whitelists.



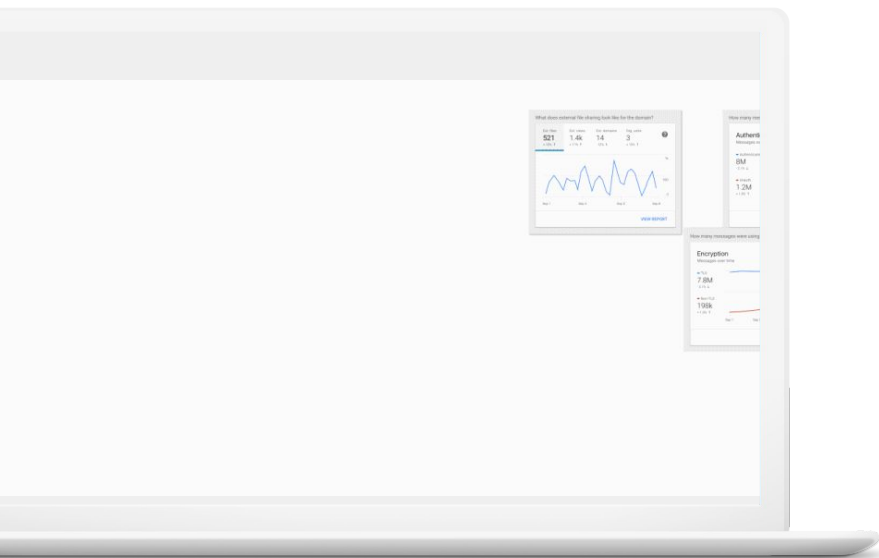
Apply [Drive](#) policies around file sharing, add-ons, and offline availability.



Gain visibility into [2-step verification](#) use across users and admins.



Security center dashboards



Streamline **cyber threat monitoring** and analysis proactively.



Detect emerging threats with visibility into your domain's data exposure and analytics to measure and demonstrate your security effectiveness.



Improve insight into how your domain's data is being exposed through file sharing.



Gain **visibility into phishing** messages targeting users within your organization.



Use **security metrics** to demonstrate your security effectiveness



Investigation tool



Target and block [phishing](#), [spam](#), and other breaches quickly.



[Remediate attacks](#) with tools that let you quickly explore, triage, and take action to limit the spread and impact of an attack.



Identify and triage [security issues](#) within your domain with deep search capability.



[Take action](#) to limit the propagation and impact of threats.



Advanced Mobile Device Management (MDM)



Protect **personal devices and apps** with centralized mobile device management for Android, iOS, and Windows.



Keep **inventory** of the devices your school owns.



Control which apps are installed.



Define **rules** to automate MDM tasks.



Apply **policy settings** to your managed devices.



Access mobile reports, audits, and alerts.



Approve **personal devices** before users can synchronize their school data.

Do more with your data and insights

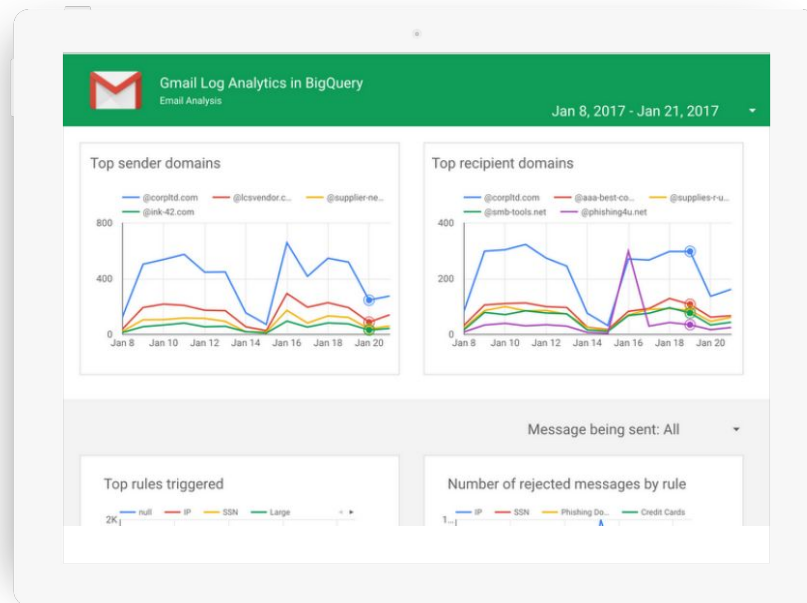
Manage your data with more control and make better decisions by getting insights through analysis, as you apply more controls over where your data resides.



Reports of Gmail logs and usage data



Data regions



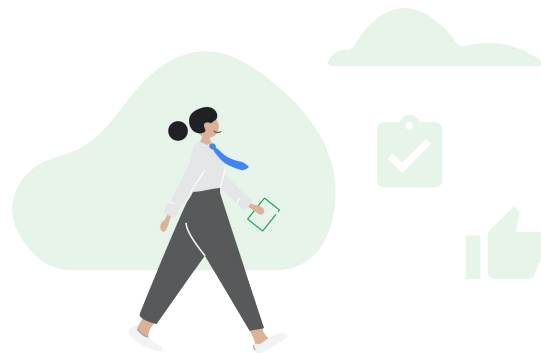
Make effective decisions based on reports

1

Search your domains' **Gmail logs** based on message content, attachments, sender, etc. Take action by deleting messages, marking them as spam or phishing, sending messages to quarantine, and more.

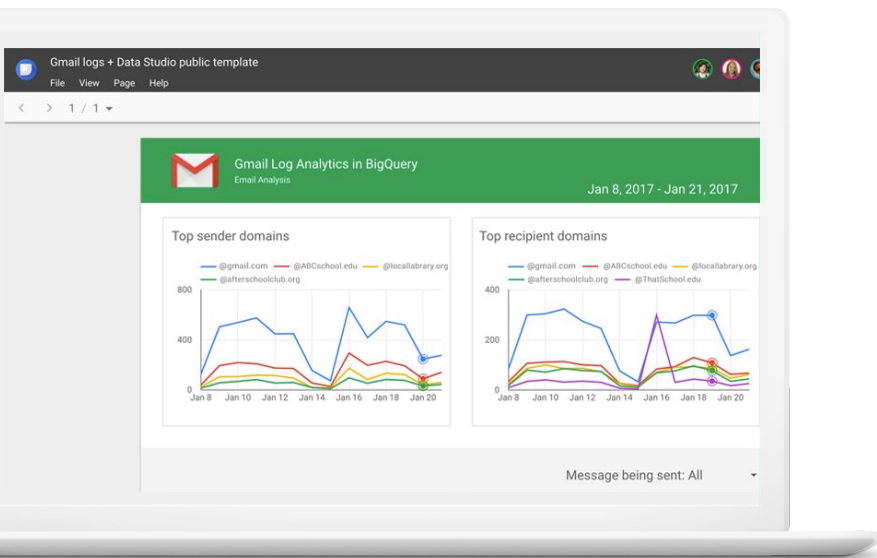
2

Easily meet any required compliance or regulations with capabilities like **data regions** that let you manage specifically where you data is stored.





Reports of Gmail logs and usage data



Analyze logs using sophisticated, high-performing **custom queries**.



Retain data as long as required using a user-configurable retention period.



Utilize BigQuery web UI, command line, or your preferred tools to do **deep analysis**.



Create **custom reporting and dashboards** using analytics tools such as Google Data Studio or your choice of third-party tools.



Data regions



Give your organization fine-grained **control of the geographical location** of your G Suite data down to data regions.



When you have **data control requirements**, choose where a copy of primary data for select G Suite apps should be stored at rest—globally distributed, U.S., or Europe.

Upgrade your teaching and learning tools



Expand learning possibilities with video.



Empower authentic thinking.

Expand learning possibilities with video

Help educators, students, and staff collaborate more efficiently and effectively with advanced capabilities in Meet.



Larger virtual classrooms and meetings



Livestream



Record and replay



Additional features rolling out



Enable more school community collaboration and online learning

1

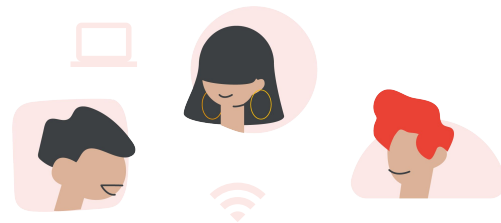
Use **video meetings** to share important announcements with educators or use them for professional development to eliminate time and expenses for travel.

2

Livestream school events to in-domain users – such as board meetings, presentations, athletic events, staff meetings, and lectures, in addition to restricted-invitation events like graduations.

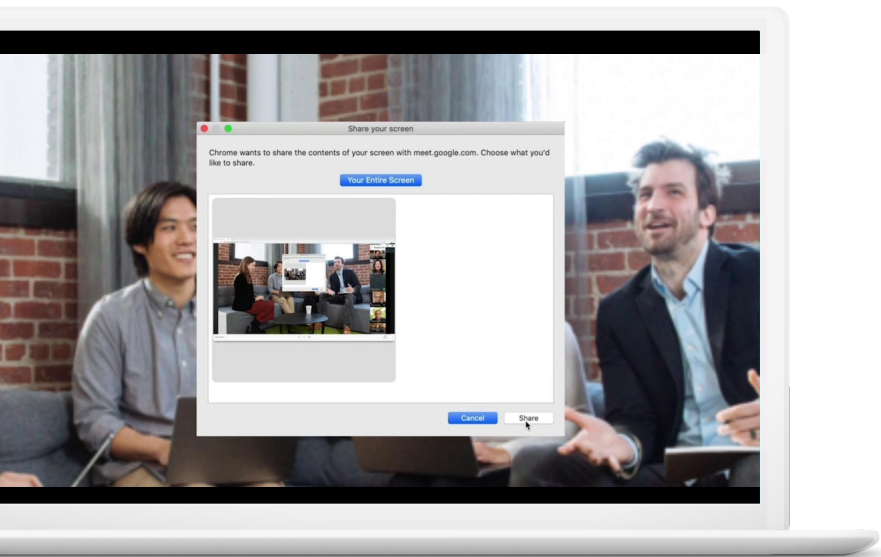
3

Enable online classes and lectures, and **record** and save them for **replay** on demand, to keep school in session even if students and/or educators need to stay at home.





Larger virtual classrooms and meetings



Let larger groups meet online and **collaborate** in real time



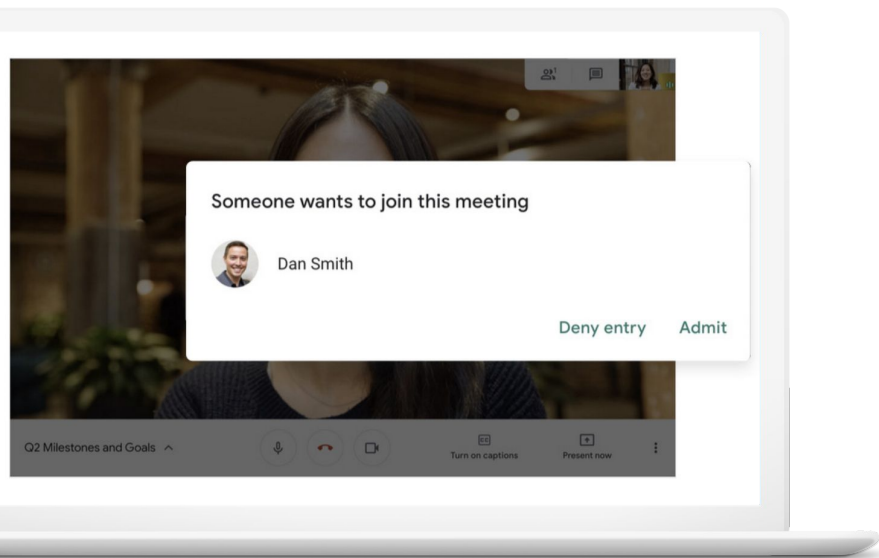
Enable live **virtual classrooms** with up to 250 participants



Easily **chat, comment, and share** screens



Livestream



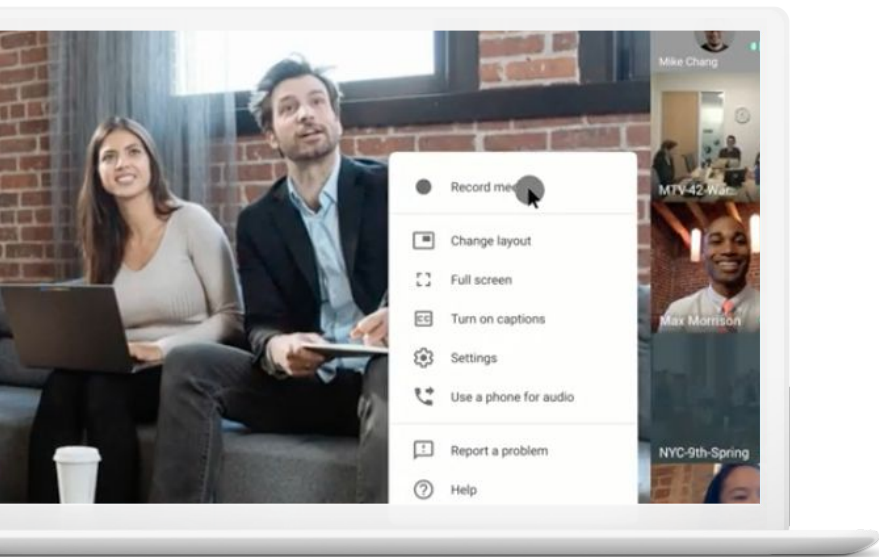
Broadcast **live school events** to an audience up to 100K in-domain participants.



Tune in by clicking a **simple link**.



Record and replay



Record meetings of any size.



Enable meeting replays.



Automatically save meetings to Drive, where you can easily archive and share with your school or community.



Google Meet additional features

More productive and flexible virtual classes and meetings coming soon



Upcoming features for G Suite for Education

- Hand raising
- Custom backgrounds
- Larger tile view (up to 49)
- Digital whiteboarding
- Closed captioning in more languages
- Additional moderation controls



Get additional upcoming features for G Suite Enterprise for Education

- Intelligent quality
- Attendance tracking
- Breakout rooms
- Q&A / Polling

Empower authentic thinking

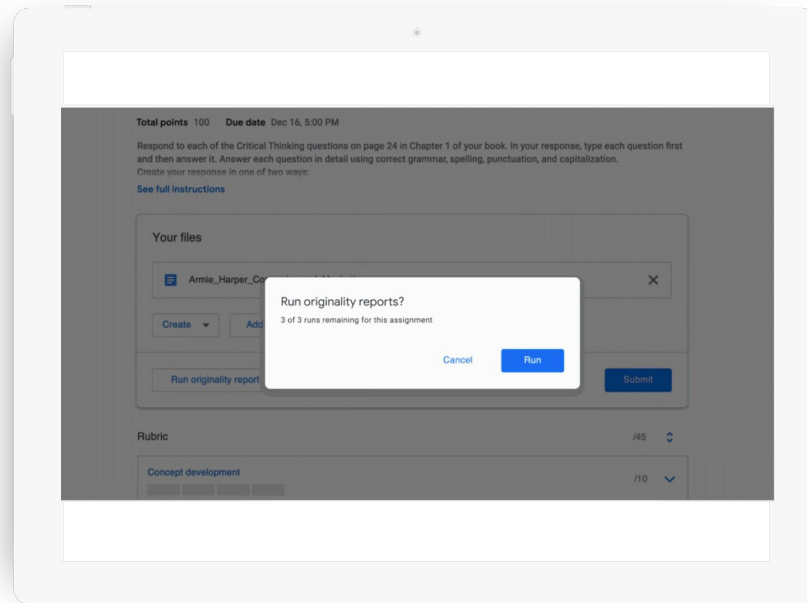
Help educators guide students in creating authentic work that properly cites outside sources.



Unlimited originality reports



Student-to-student detection



Ensure authenticity in student work and inspire more critical thinking

1

Use unlimited **originality reports** to help teach students to cite correctly, avoid plagiarism, and become critical thinkers. Not to mention streamline the grading process for educators.

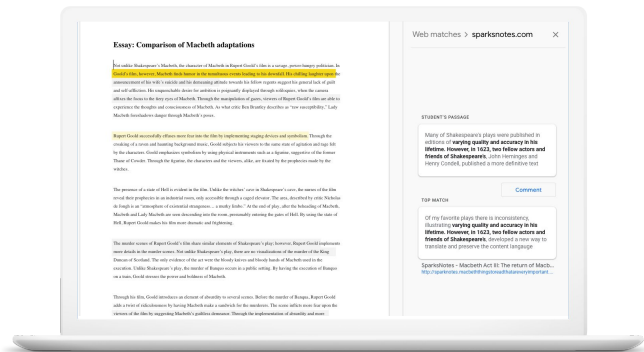
2

Build your school's own **private repository** of all student submissions to enable **student-to-student detection**. Each school owns its own repository, which can't be accessed or scanned by anyone outside the organization.





Unlimited originality reports



Guide students to **create original work** efficiently.



Provide **unlimited originality reports** to save educators grading time.



Cite **outside sources** properly.



Student-to-student detection

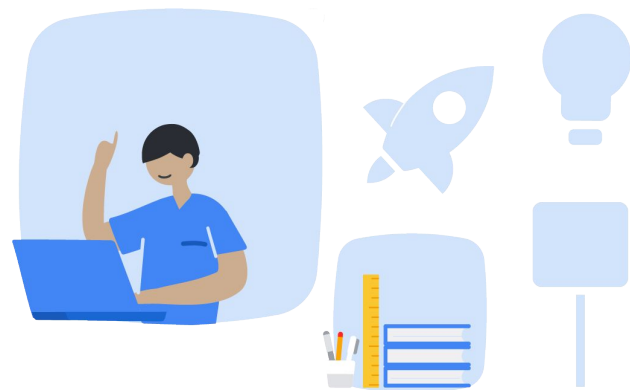


Retain **scanned student work** within a **secure environment** which admins control and can add or remove files as needed.



Compare **current student** work to anything previously scanned to your private, **school-owned repository**, currently in beta.

Upgrade



Full-domain vs partial-domain license



More on licensing can be found [here](#).

Deciding on whether to purchase G Suite Enterprise for Education for all of the users in your domain or for just some of your users?

Choose full-domain



Full access to security and admin tools:

| | |
|------------------------|--------------------------------|
| Security health | Data regions |
| Security dashboard | Mobile-device management |
| Investigation tool | Third-party archiving solution |
| BigQuery reports | Password-vaulted apps |
| Gmail logs in BigQuery | Context-Aware Access |



Full access to teaching and learning tools:

| | |
|---|---|
| Unlimited originality reports | Up to 100,000 in-domain participants in livestreams |
| Student-to-student detection (beta) | Live video meetings with up to 250 participants |
| Ability to record, save, and share meetings | Cloud Search |
| | International dial-in |

Choose partial-domain



Only licensed users get the same functionality and data access as full-domain. Unlicensed users have the built-in features of G Suite Enterprise for Education.

Let's figure out what you need.

- ☆ How many teachers need unlimited originality reports or the ability to record their lessons?
- ☆ How many users need full access to your domain's data and admin controls?
- ☆ How many of your students need full access to your domain's data and/or advance learning tools?

Pricing: G Suite Enterprise for Education

Get premium features built to enterprise standards, but heavily discounted for educational institutions.



Individual pricing (MSRP)

For individuals, teams, and departments

\$48 user/year

Minimum purchase of 50 upgrades OR upgrades for 15% of total faculty and staff* (whichever is higher is required)



Full-domain pricing (MSRP)

Purchase upgrades for all faculty and staff*

~~\$48~~ **\$24** user/year

Introductory pricing through fall 2020**

* Faculty and staff defined as any individual who is full-time or part-time faculty or staff (student workers and graduate assistants are excluded). Faculty/staff-to-student ratio must be 1:10 or less.

**Introductory pricing is good for 3 years from initial date of purchase. After expiration of the 3-year price lock, Services fees will be charged in accordance to the then-current Google list price. Notwithstanding the foregoing, and upon customer request, Google will work in good faith with the customer to negotiate new pricing terms.

Next steps



Nikhil Jain

+91 9811636306

info@digisoft.in

<https://digisoft.in>



Talk to an expert today to get started

goo.gl/3qG11B



Find out more about G Suite Enterprise for Education goo.gl/GJWuwH



Explore the Help Center for technical answers
<https://support.google.com/a/answer/7370133>

Appendix

Full-domain and Partial-domain full comparison
chart

Compare full-domain and partial-domain license offerings: security & admin controls

| Feature | Full-domain license | Partial-domain license |
|------------------------|---|---|
| Security health | Get custom recommendations to adjust your settings for optimum protection – across G Suite and down to individual organizational units, such as campus, department, or class. | Same functionality as full-domain license |
| | Security health is only available to licensed G Suite admins. | |
| Security dashboard | Streamline monitoring and analysis, detect threats as soon as they emerge, and analyze your security effectiveness with broad visibility across your domain. | Same functionality as full-domain license |
| | The security dashboard is only available to licensed G Suite admins. | |
| Investigation tool | Remediate attacks like malware, phishing, or spam, and quickly investigate, triage, and take action to mitigate the impact of an incident. | Same functionality as full-domain license |
| | The investigation tool is only available to licensed G Suite admins. | |
| Gmail logs in BigQuery | Export all your school's Gmail logs and usage data to BigQuery for analysis or export to your choice of third-party analysis tools. | Limited functionality: Only the data of licensed users will be surfaced in Gmail logs, and usage data will be exported to BigQuery. |
| | Gmail logs in BigQuery is only available to licensed G Suite admins. | |

Compare full-domain and partial-domain license offerings: security & admin controls (cont)

| Feature | Full-domain license | Partial-domain license |
|--------------------------|--|---|
| Reporting in BigQuery | Move G Suite reporting and audit data from the G Suite Admin Console to BigQuery. Create highly customizable, comprehensive, and scalable reports to audit and analyze G Suite usage and adoption. | Same functionality as full-domain license |
| | Reporting in BigQuery is only available to licensed G Suite admins. | |
| Data regions | Institutions with data-control requirements can choose where a copy of primary data for select G Suite apps should be stored at rest – globally distributed, in the US, or in Europe. | Limited functionality: Only data for licensed users can be contained in a data region. |
| | Data regions are only available to licensed G Suite admins. | |
| Mobile-device management | Enable proactive management of user-owned mobile devices by setting device rules . Review audits and reports of activities, and securely manage work apps on users' devices while leaving personal apps under their control. | Limited functionality: G Suite Enterprise for Education mobile-device management (MDM) features are available only to licensed users, and MDM rules apply only to them. |
| | Mobile-device management is only available to licensed G Suite admins. | |

Compare full-domain and partial-domain license offerings: security & admin controls (cont)

| Feature | Full-domain license | Partial-domain license |
|---|--|--|
| Third-party archiving solution | Set up a third-party archiving solution to archive Gmail journal messages. This can help admins comply with email requirements, such as SEC Rule 17a-4, and allows users access to archives. | Limited functionality: Gmail data is available for third-party archiving for users with assigned G Suite Enterprise for Education licenses only. |
| Third-party archiving is only available to licensed G Suite admins. | | |
| Password-vaulted apps | Make it easy for admins to enable single sign-on (SSO) for thousands of additional apps that don't support modern authentication standards. The combination of standards-based and password-vaulted app support can deliver one of the largest SSO app catalogs in the industry. | Limited functionality: Admins must have a license in order to set up password-vaulted apps. Users must have a license in order to use password-vaulted apps. |
| Password-vaulted apps are only available to licensed G Suite admins. Users with faculty and staff licensing will be able to use its functionality if they're granted access by the admin. | | |
| Context-Aware Access | Set up different access levels based on users' identities and the context of the requests. Provide granular access controls without the need for a virtual private network, and give users access to G Suite resources based on organizational policies. | Limited functionality: Context-Aware Access policies can be defined only by licensed users, and can be applied only to licensed users. |
| Context-Aware Access is only available to licensed G Suite admins. | | |

Compare full-domain and partial-domain license offerings: teaching & learning tools

| Feature | Full-domain license | Partial-domain license |
|--|---|--|
| Originality reports | Focus on helping students learn how to properly incorporate and cite outside ideas, while providing instructors with a quick way to verify academic integrity. Only licensed faculty have the ability to generate unlimited originality reports. | Limited functionality: Unlicensed faculty have the ability to generate up to three originality reports per course. |
| While Assignments is in beta, all faculty – whether licensed or unlicensed – will have the ability to generate an unlimited number of originality reports. | | |
| Meet recordings | Record meetings and automatically save the recordings to Drive, and then share the recordings with your community. Only licensed faculty and staff can create recorded meetings. Users with promotional student licenses cannot create recorded meetings. | Limited functionality: Only licensed users have the ability to create recorded meetings. |
| Meet livestream | Broadcast school activities such as presentations, announcements, and lectures with up to 100,000 in-domain participants. Only licensed faculty and staff can add livestreaming to a meeting. Users with promotional student licenses cannot add livestreaming to a meeting. | Limited functionality: Only licensed users have the ability to add livestreaming to a meeting. |

Compare full-domain and partial-domain license offerings: teaching & learning tools (cont)

| Feature | Full-domain license | Partial-domain license |
|-----------------------|--|---|
| Larger meetings | <p>Host live video meetings and district-wide training with up to 250 people who can chat, comment, share screens, and collaborate in real time.</p> <p>Only licensed faculty and staff have the ability to host more than 100 people. Users with promotional student licenses cannot host more than 100 people.</p> | <p>Limited functionality: Only licensed users have the ability to host more than 100 people.</p> |
| Cloud Search | <p>Bring the best of Google Search and artificial intelligence to G Suite. Quickly find content anywhere on your school's domain with Cloud Search.</p> | <p>Limited functionality: Only licensed users have access to Cloud Search.</p> <p>Note: The Cloud Search embeddable widget and BigQuery API are only available to users who purchase a separate Cloud Search platform license – it is not included with G Suite Enterprise for Education.</p> |
| International dial-in | <p>Create Google Meet video meetings with an international dial-in option, or let people join a Meet video meeting by phone in certain countries.</p> | <p>Limited functionality: Only licensed users have the ability to create meetings with international phone numbers for dial-in. Participants do not need to be licensed users.</p> |

Compare full-domain and partial-domain license offerings: BETA program

| Feature | Full-domain license | Partial-domain license |
|--|--|---|
| G Suite Migrate | Assess and plan migration projects and confidently migrate large amounts of valuable content into G Suite. Sign up for the beta program. | Limited functionality: Institutions need to have at least 15% of their faculty and staff on the G Suite Enterprise for Education account to qualify for G Suite Migrate. All users in the domain can be migrated once this requirement is met. |
| Migration of Microsoft Exchange Online Archives | Allow admins to migrate Microsoft Exchange Online Archives using G Suite Migrate. This feature is available only to G Suite Migrate program participants. | Limited functionality: Institutions need to have at least 15% of their faculty and staff on the G Suite Enterprise for Education account to qualify for the migration of the Microsoft Exchange Online Archive. All users in the domain can be migrated once this requirement is met. |
| Migration support for Drive shortcuts | Use Drive shortcuts to preserve folder hierarchies when migrating subfolders with unique permissions to shared drives. | Limited functionality: Institutions need to have at least 15% of their faculty and staff on the G Suite Enterprise for Education account to qualify for migration support for Drive shortcuts. All users in the domain can be migrated once this requirement is met. |
| Migration support for shared Drive subfolder sharing | Allow admins to preserve sharing rights for additional users when migrating subfolders to shared Drives. This feature is available only to G Suite Migrate program participants. | Limited functionality: Institutions need to have at least 15% of their faculty and staff on the G Suite Enterprise for Education account to qualify for migration support for shared Drive subfolder sharing. All users in the domain can be migrated once this requirement is met. |

Appendix

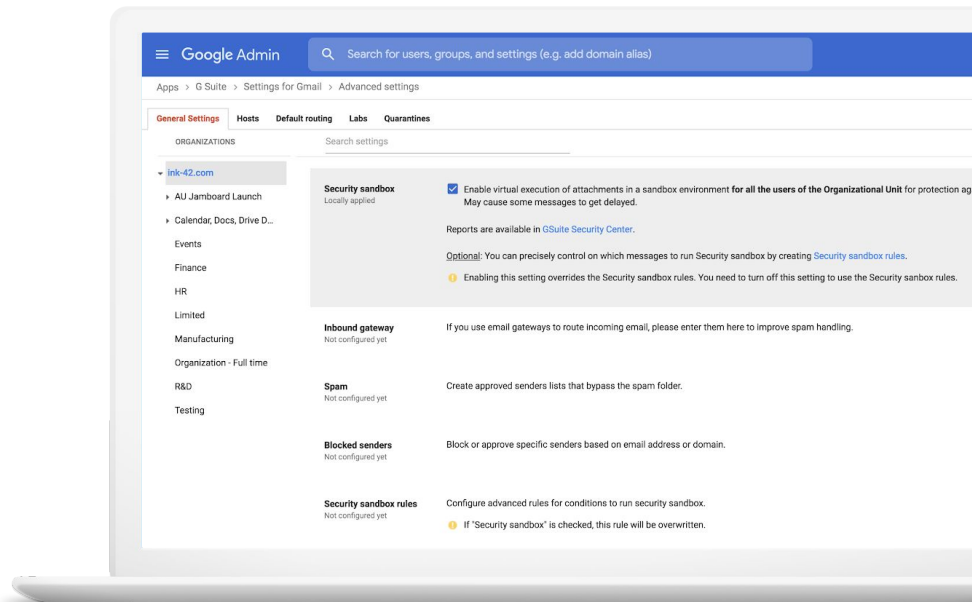
Additional features | Enhance security, visibility,
and control



Security sandbox

Security sandbox for Gmail detects the presence of previously unknown malware in attachments by virtually “executing” them in a private, secure sandbox environment, and analyzing the side effects on the operating system to determine malicious behavior.

This is done in a matter of minutes prior to the delivery of the email, and provides users with an extra layer of security.

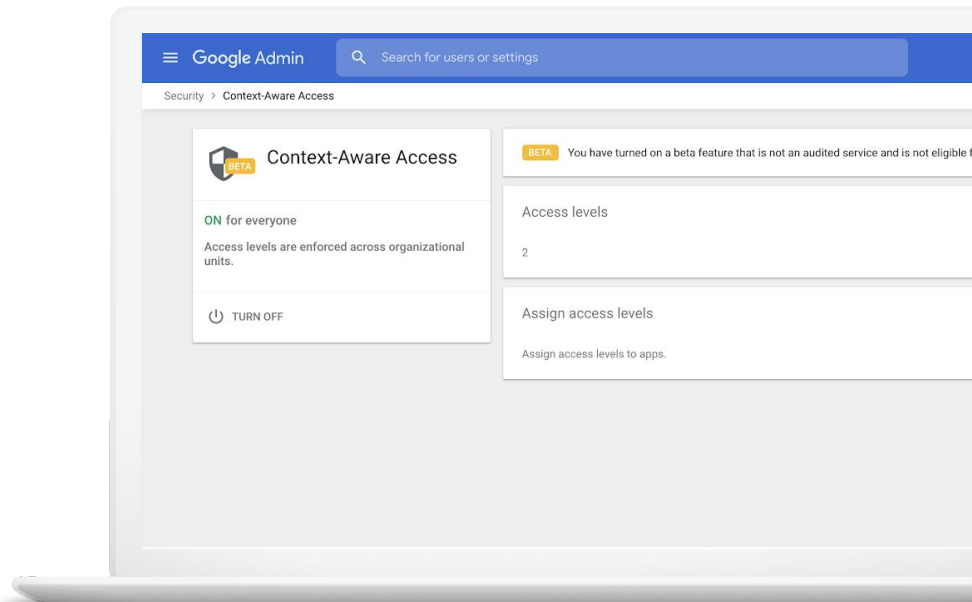




Context-Aware Access

Dynamically control access to G Suite apps based on a user's identity and the context of their request (device security status, IP address, and so on).

- Set up different **access levels based on a user's identity** and context of the request
- Use granular controls for **different organizational units (OU)**
- Control access to several G Suite apps by setting **different policies for the different access level profiles** that have been set up

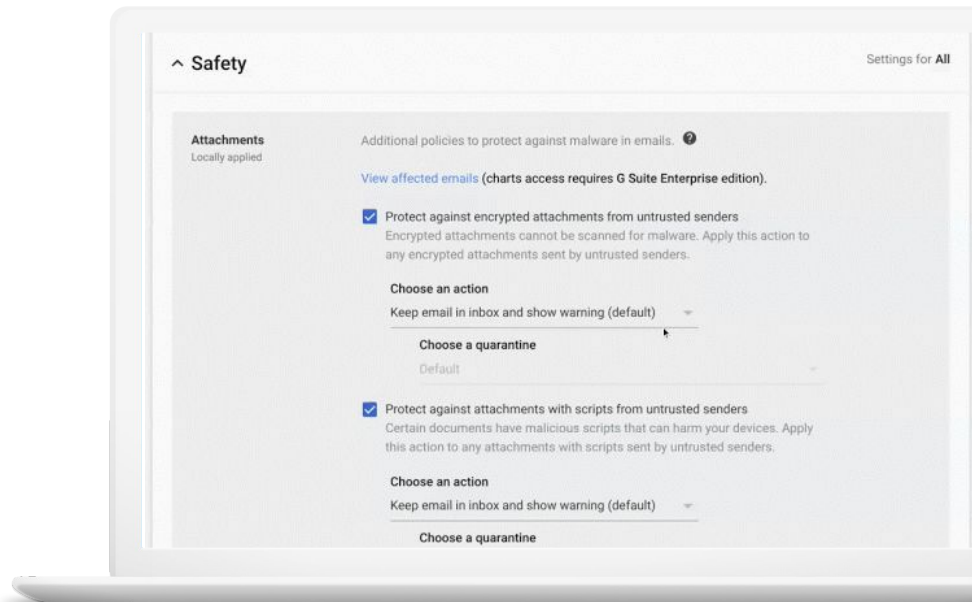




Advanced anti-phishing and malware protections in Gmail

We've launched a program to provide admins with even more controls for advanced anti-phishing and malware protections via the advanced safety settings in Gmail.

- Place emails into a quarantine that matches phishing and malware controls
- Protect against anomalous attachment types in emails and automatically display a warning banner, send them to spam, or quarantine the messages
- Protect your Google Groups from inbound emails spoofing your domain



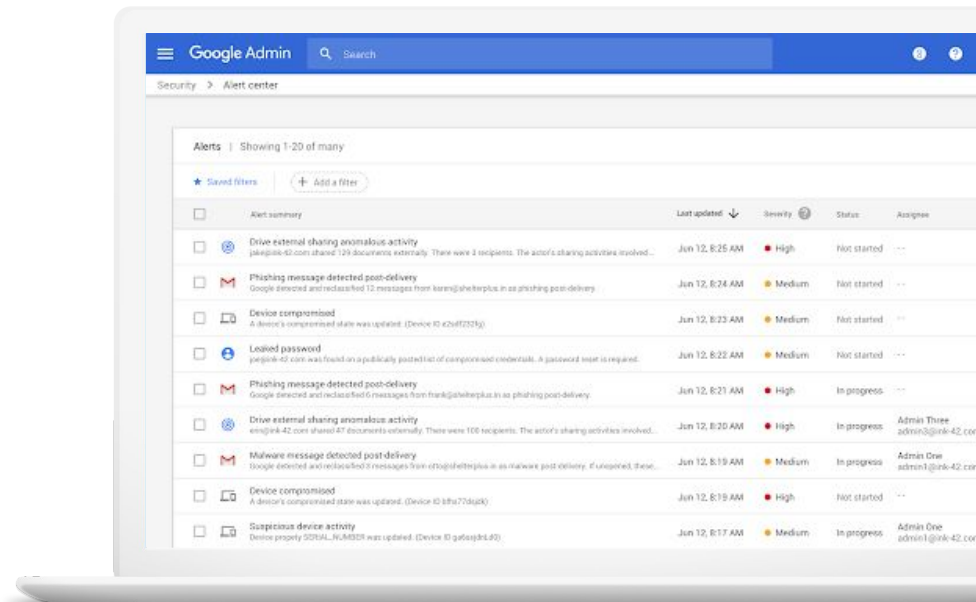


Enhance security, visibility, and control

Using machine learning to detect anomalous activity in G Suite

With the [beta](#) of anomalous alert activity for Google Drive, G Suite Enterprise admins can now automatically receive anomalous activity alerts in the G Suite alert center.

Machine learning models analyze security signals within Google Drive to **detect potential security risks** such as data exfiltration and **unusual user behavior patterns** that can otherwise be more difficult for security admins to discover.

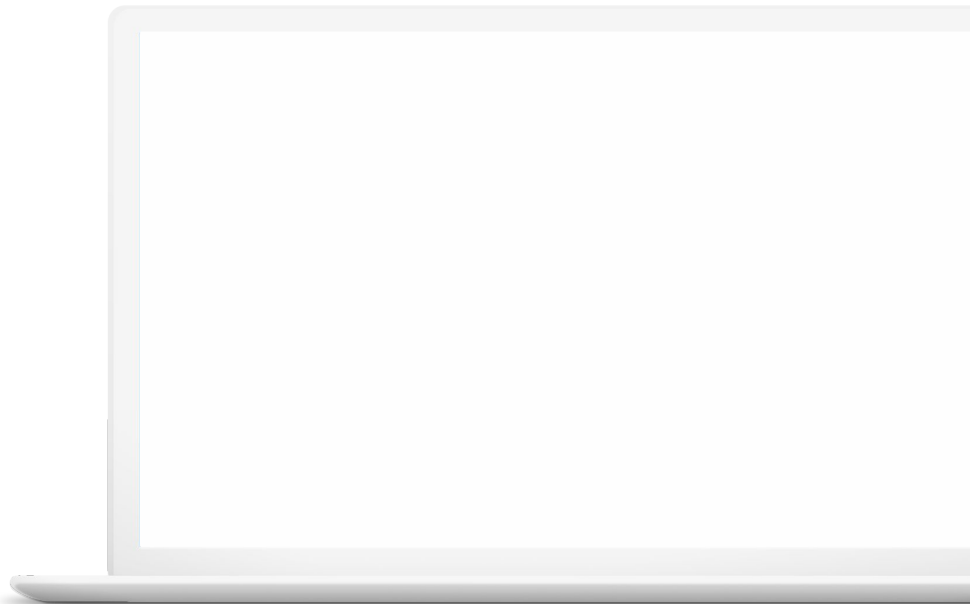




Defend high-risk users with the Advanced Protection Program

With [Advanced Protection Program](#) for enterprise, you'll be able to enforce a set of enhanced security policies for employees in your organization that are most at risk for targeted attacks. These policies include:

- Requiring the use of security keys for maximum protection against phishing
- Automatically blocking access to non-whitelisted third-party apps
- Enhanced email scanning for threats
- Download protections for certain file types when signed in to Google Chrome



Appendix

Do more with your data and insights
feature slides



Do more with your data and insights

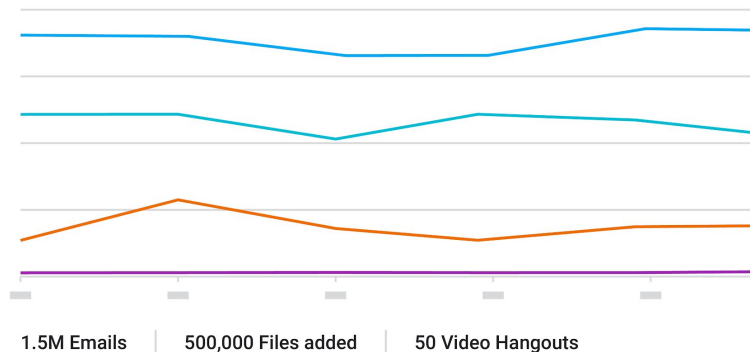
Export usage data to BigQuery

Admins will be able to easily analyze the adoption and usage of G Suite apps in their domain to analyze trends and track answers to questions like:

- Number of documents **made public**
- Number of documents **shared outside** of the domain
- Documents **containing PII** or words like “Confidential”

Apps usage activity

● Gmail ● Drive ● Calendar ● Classroom





Do more with your data and insights

Access Transparency

Access Transparency enables you to get more visibility into actions taken by Google staff related to your data.

You can view the reason for each access, including references to specific support tickets where relevant, which may help you support your audit requirements.

